

- F. Plug in the first power cord into the back of your monitor.

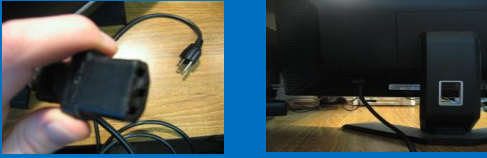


Figure 9. Plugging in the monitor power cord.

- G. Plug the second power cord into the back of your tower.

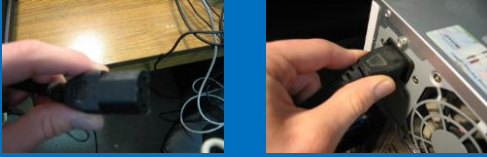


Figure 10. Plugging in the tower power cord.

4. Plug in the power cord for the desktop and for the monitor into an electrical outlet.

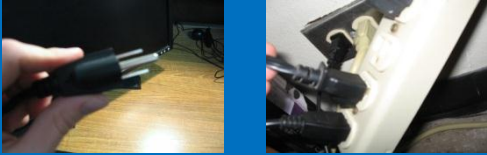


Figure 11. Plugging the power chords into an electrical outlet.

5. Press the power button located on the front of the machine. It should start right up and begin a setup process for you to complete.



Figure 12. Powering up your new Dell PC!

Congratulations! You have completed the assembly and setup of your new Dell™ Inspiron 530.

Dell Customer Support

1-877-293-1197 24/7
Support.dell.com



Vikas Bhakta, Trevor Gale,
Darrin Miller, Peter Perez

Assembling Your Dell Inspiron 530



Introduction

We have provided this brochure as a simple guide for you to easily set up your new Dell™ Inspiron 530 desktop computer for immediate use. This guide includes all the information you need to properly and safely assemble your new computer system.

Warning!
DO NOT plug any power cords into a power outlet until all components are attached.

Materials

You should have the following materials in the box:

- Tower
- Monitor
- Mouse
- Keyboard
- Component cable for monitor
- (2) Power cables for tower and monitor
- LAN cable for internet
- Speakers

(See figure 1 for materials)

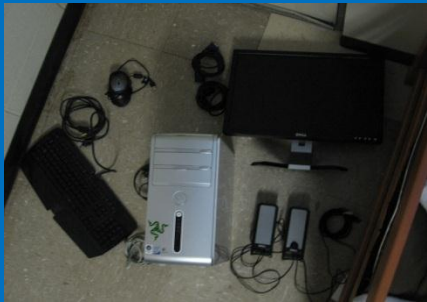


Figure 1. Computer Materials

1. Remove all materials from the box.

2. Arrange all components in the desired positions on your desk or workspace.

Tip: PC towers are most commonly placed on the desktop or beneath it (See figure 2). Make sure there is room for your computer to exhaust air from the back. Otherwise, it may overheat.



Figure 2. Proper Tower Placement.

Tip: Your keyboard should be in front of your monitor, your mouse should be to the right of your keyboard, and arrange your speakers to the left and right of the monitor.

(See figure 3 for good monitor, mouse, keyboard, and speaker arrangement).



Figure 3. Proper Desktop Arrangement.

3. Plug in the following cords and accessories.

- A. Plug the mouse into a USB port.



Figure 4. Mouse and USB plug in.

- B. Plug the keyboard into a USB port.

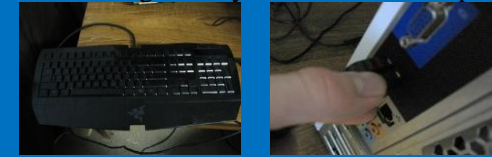


Figure 5. Keyboard and USB plug in.

- C. Plug the speakers into the audio input port and the USB power cord into a USB port.



Figure 6. Speakers and Audio/USB plug in.

- D. With the monitor component cable, plug one end into the back of your monitor and the other into the monitor component cable.

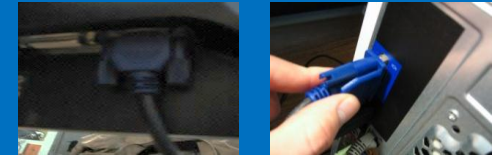


Figure 7. Monitor Component Cable Plug In.

- E. Plug in the Ethernet Cable into the Ethernet port.

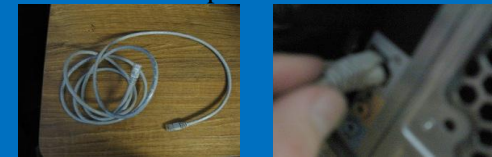


Figure 8. Plugging in the Ethernet Cable.